

## 10012WOX Wilflex Oasis™ Particle Base

Wilflex™ Oasis Particle Base is a crystal clear waterbase ink designed to be used as a carrier for polyester flake glitters and other particles.

### Highlights

- ▶ Excellent clarity.
- ▶ Prints easily on manual and automatic presses.
- ▶ Good wash fastness and durability.

### Printing Tips

- ▶ When using glitter particle, it is recommended to use a hex shape measuring no larger than 0.015" (375 microns).

### Compliance

- ▶ Non-PVC, non-phthalate.
- ▶ For compliance certifications, please visit [www.wilflex.com/compliance](http://www.wilflex.com/compliance).

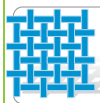
### Precautions

- ▶ Perform fusion tests before production. Failure to cure ink properly may result in poor wash fastness, inferior adhesion and unacceptable durability. Ink flash temperatures should be measured on the ink surface using an infrared thermometer sensor. Ink cure temperatures should be measured using a Thermoprobe placed directly in the wet ink film (printed) and verified on the production run substrate(s) and production equipment. It is the responsibility of the printer to determine that the correct ink has been selected for a specific substrate and the application processes meet your customer's standards or specifications.
- ▶ Ink cure temperature is recommended at 320°F (160°C) for 1 full minute. Check the cure temperature at the ink surface.
- ▶ Containers must maintain air-tight seal when not in use.
- ▶ **NON-CONTAMINATION OF OASIS INKS:** Do not add or mix non-Oasis inks, additives or extenders with Oasis inks. All buckets, palette knives, stirring apparatus, squeegees, flood bars and screens must be cleaned properly and free of phthalates and PVC containing inks. Non-phthalate emulsions and pallet adhesives must be used. Failure to follow these precautions may cause phthalate contamination in violation of consumer protection laws and regulations.
- ▶ Any application not referred in this product information bulletin should be pre-tested or consultation sought with Wilflex Technical Services Department prior to printing.
- ▶ Email: [techserviceswilflex@polyone.com](mailto:techserviceswilflex@polyone.com)



#### Fabric Types

100% cotton and some blends



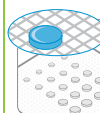
#### Mesh

Counts: 24-60 t/in (10-24 t/cm)  
Tension: 25-35 n/cm<sup>2</sup>



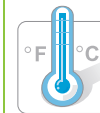
#### Squeegee

Durometer: 60, 60/90/60, 70  
Edge: Square, Sharp  
Stroke: Medium Speed  
Angle: Steep (15-20°)  
*\*Do not use excess squeegee pressure.*



#### Water-Resistant Stencil

Direct: 2 over 2  
Capillary/Thick Film: N/A  
Off Contact: 1/16" (.2cm) or lower  
Emulsion-over-Mesh: 15-20%



#### Flash & Cure Temperatures

Flash: N/A  
Cure: 1 minute @ 320°F (160°C)



#### Pigment Loading

WPC: WPC: 6% max by weight; Particle: 15% max by weight  
*\*All percentages listed at % by weight.*



#### Oasis Additives

N/A  
*\*All percentages listed at % by weight.*



#### Storage

37-104°F (3-40°C)  
Use within one year of manufacture date.  
Keep containers sealed at all times.  
Insulate product to avoid extreme hot or cold temperatures.



#### Clean Up

Warm Soap Water (Tap)  
Gentle Pressure



#### Health & Safety

MSDS: [www.polyone.com](http://www.polyone.com) or  
Contact your local CSR.